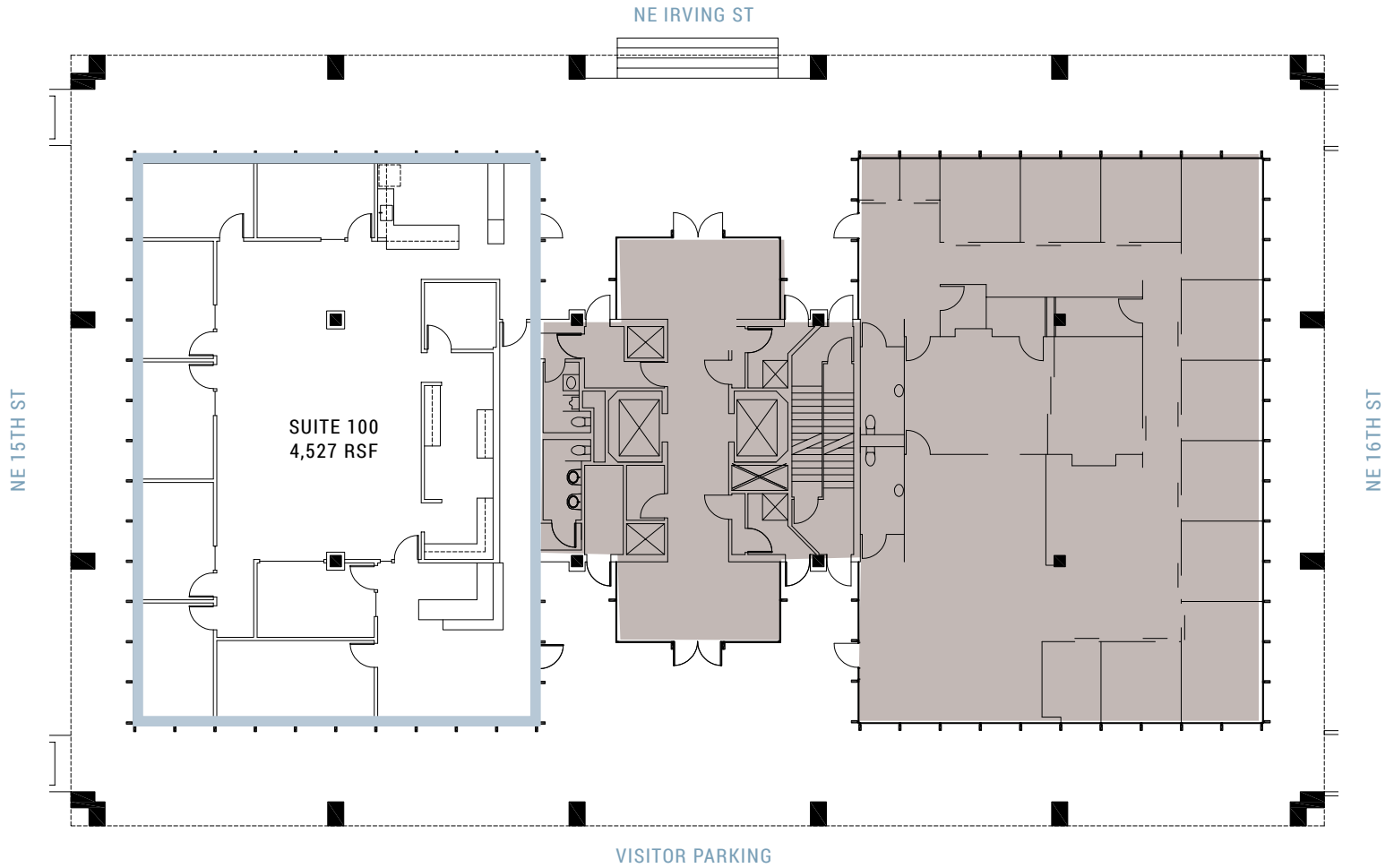


1ST FLOOR

4,527 RSF

- Ready for creative service orientated buildout
- Lobby exposure and dedicated entries
- Available 4/1/2022



ANNALORE RODMAN
Licensed in OR
+1 503 546 3671
annalore.rodman@am.jll.com

Jones Lang LaSalle Brokerage, Inc.



1 | 5 | 0 | 0

1500 NE Irving Street • Portland, OR 97232

2ND FLOOR

1,915 - 14,705 RSF

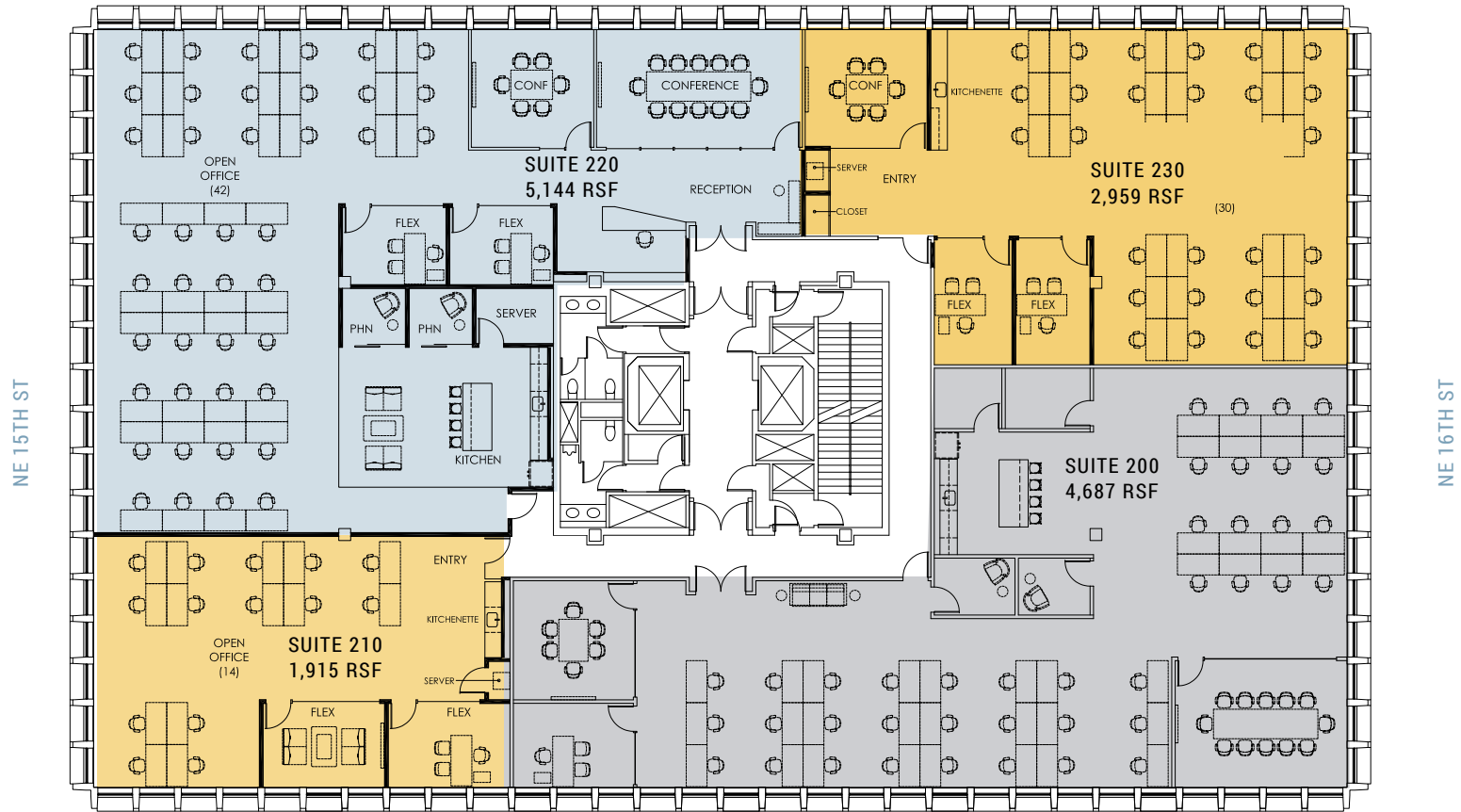
- 12' ceilings
- Warm shell
- Ready for creative buildout
- Demising options available

ANNALORE RODMAN
 Licensed in OR
 +1 503 546 3671
 annalore.rodman@am.jll.com

Jones Lang LaSalle Brokerage, Inc.



NE IRVING ST



*FURNITURE FOR DISPLAY PURPOSES ONLY

NEWLY COMPLETED SPEC SUITE

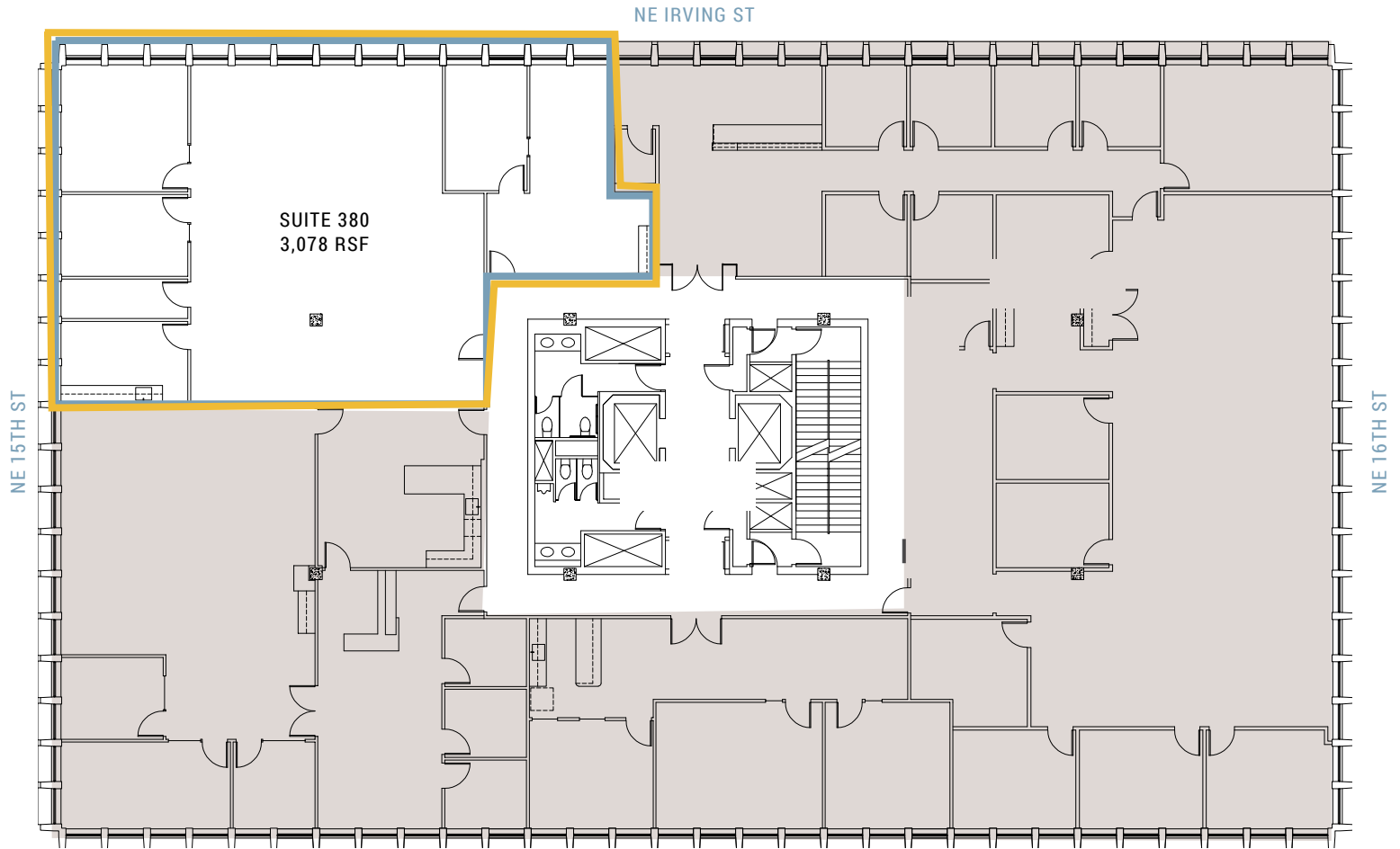
1 | 5 | 0 | 0

1500 NE Irving Street • Portland, OR 97232

3RD FLOOR

3,078 RSF

- Ready for creative buildout



ANNALORE RODMAN
Licensed in OR
+1 503 546 3671
annalore.rodman@am.jll.com

Jones Lang LaSalle Brokerage, Inc.



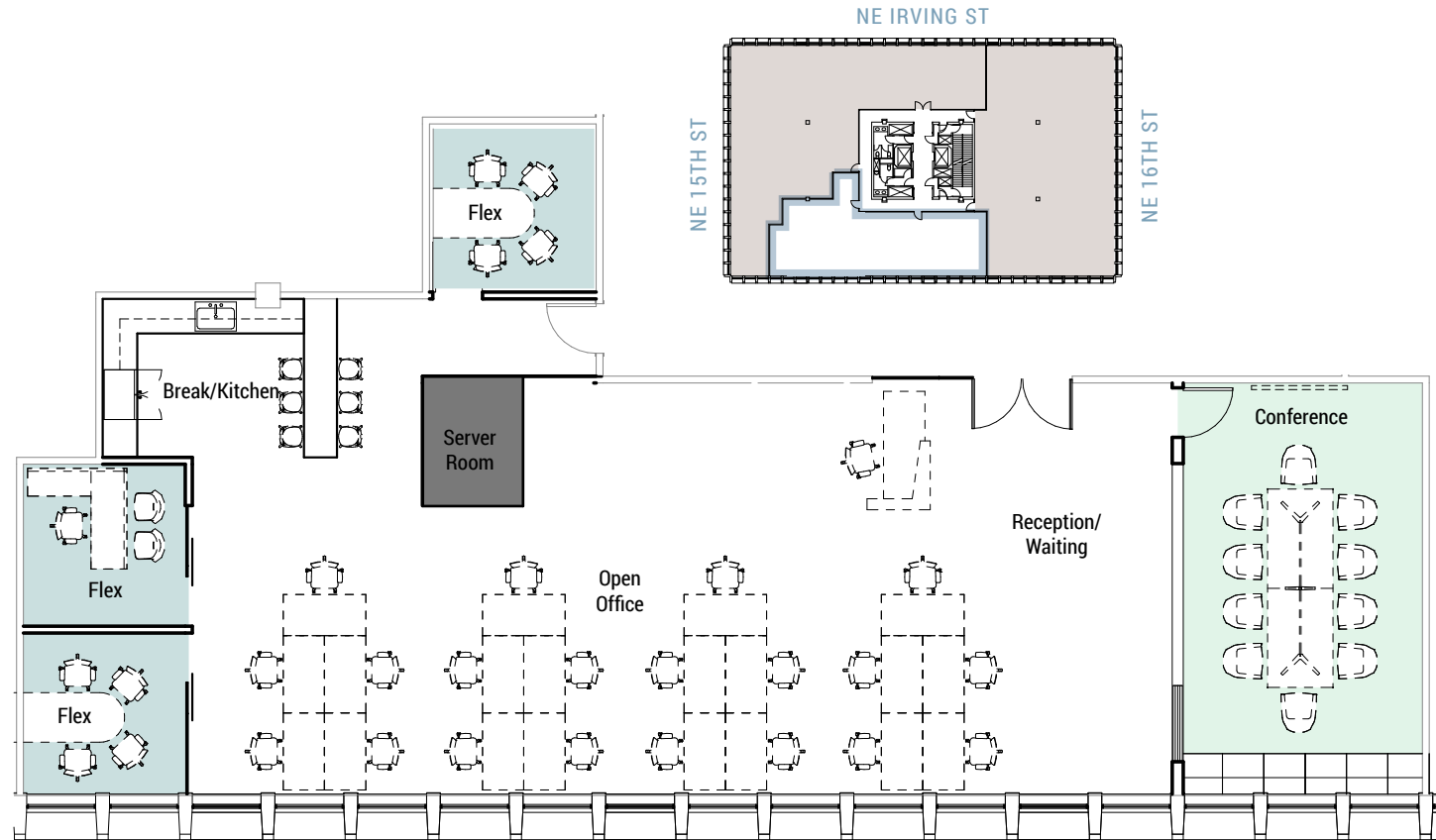
1 | 5 | 0 | 0

1500 NE Irving Street • Portland, OR 97232

4TH FLOOR

2,964 RSF

- Creative spec suite with exposed ceiling
- Elevator Lobby exposure
- Move-in ready



*Furniture for display purposes only

ANNALORE RODMAN
Licensed in OR
+1 503 546 3671
annalore.rodman@am.jll.com

Jones Lang LaSalle Brokerage, Inc.



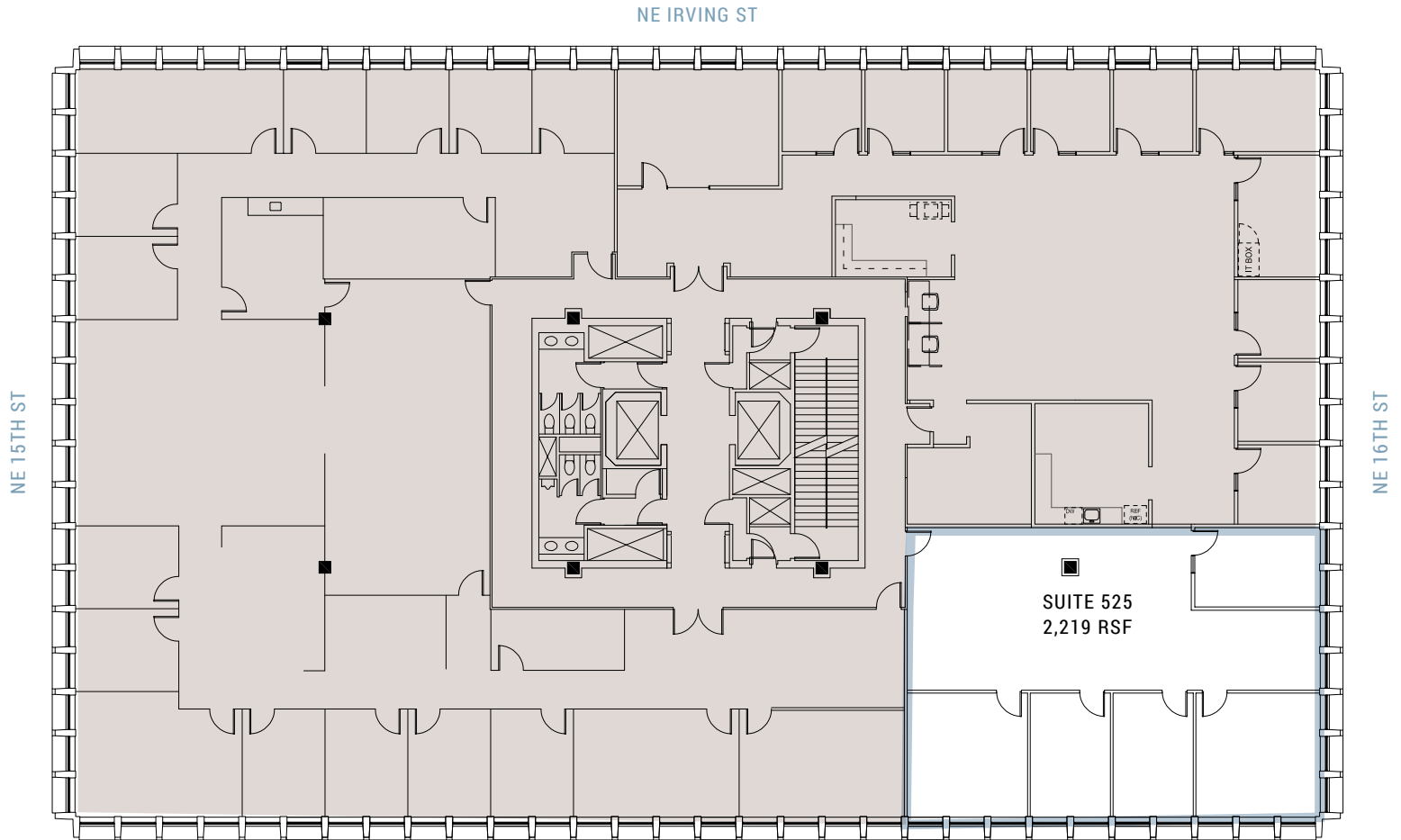
1 | 5 | 0 | 0

1500 NE Irving Street • Portland, OR 97232

5TH FLOOR

2,219 RSF

- Top floor
- Corner suite with private offices



ANNALORE RODMAN
Licensed in OR
+1 503 546 3671
annalore.rodman@am.jll.com

Jones Lang LaSalle Brokerage, Inc.



1 | 5 | 0 | 0

1500 NE Irving Street • Portland, OR 97232